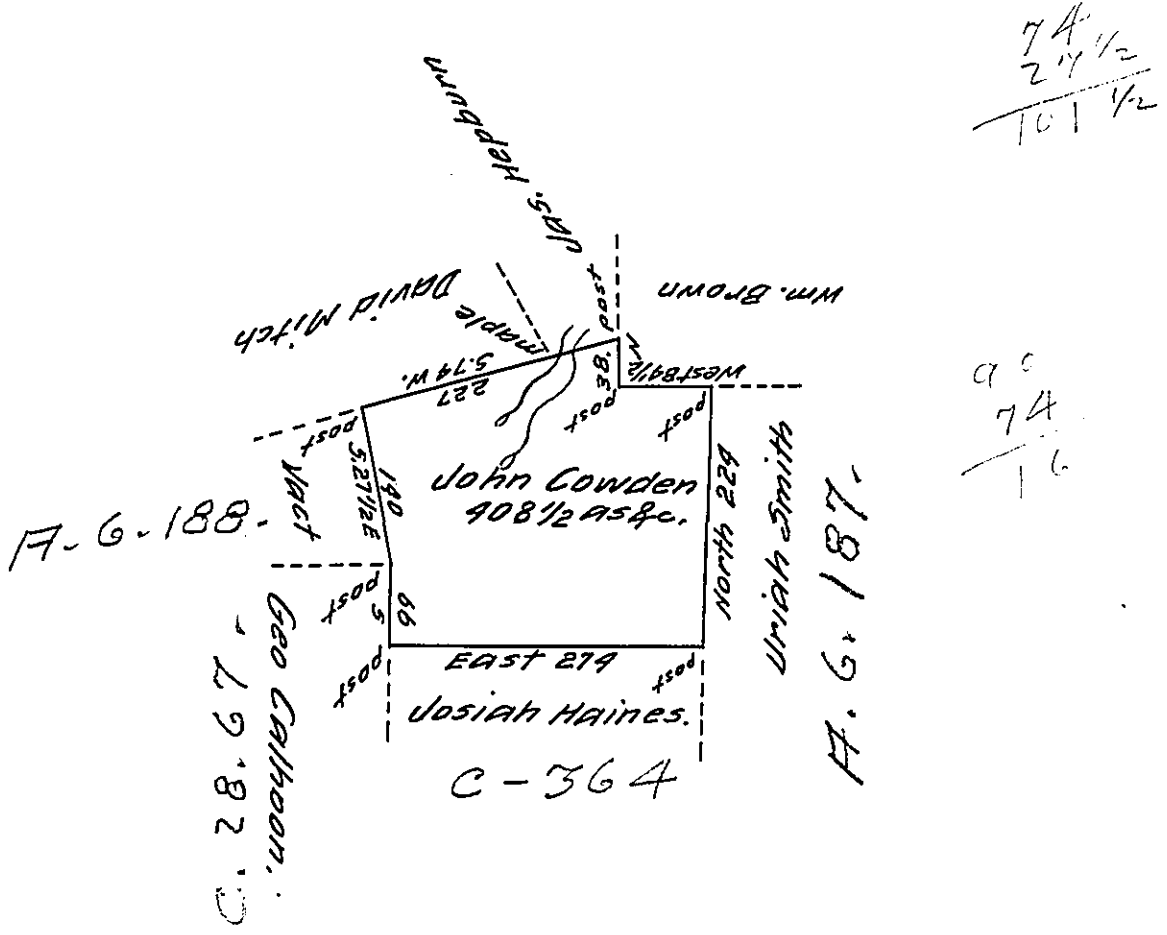


Foster -
Luzerne.



Draft of a tract of land called — Situate joining
Land survd. for James Hepburn & others in the County
of Northumd. Containing four hundred and Eight Acres
1/2 & Allowe. Surveyed for John Cowden the 9th Day of
Sepr. 1713 by virtue of a warrant dated the 13th Day of
June 1793.

To Daniel Brodhead Esqr. } by Wm. Gray. D. S.
Survvr. Genl. }

IN TESTIMONY that the above is a copy of the original remaining on file in
the Department of Internal Affairs of Pennsylvania, made
conformably to an Act of Assembly approved the 16th day of
February, 1833, I have hereunto set my Hand and caused
the Seal of said Department to be affixed at Harrisburg,
this thirty first day of October 1911

Nancy Houck
Secretary of Internal Affairs.